

# INSTALLATION MANUAL

## Touch Panel 4-switch 40A

14.691.04

### SPECIFICATION :

- Operating Voltage - DC12V/24V
- 4 Switches : 1 x 15A; 2 x 10A; 1 x 5A

### FEATURES :

- Touch Panel - IP65; Control Box - IP67
- Overload protection.
- Reverse polarity protection.
- CE certified.
- Programmed with three functions: ON-OFF (Default setting); Momentary ON; ON-OFF-ON switches.

### INSTALLATION :

**Note:** Touch Panel supplied with 1500mm wire & connector; Control Box supplied with 330mm wire & connector for connecting Touch Panel and wires harness for device connection.

1. For Touch Panel (Fig. 1) : Drill a  $\varnothing 16\text{mm}$  hole for cable passage and seal edges (if needed), mount the Touch Panel using 4xM3 screws. Make sure the Touch Panel in correct direction by removing the front cover and rotate until the label aligned. Do not put on the front cover until you complete the switch function setup in step 3.  
For Control Box (Fig.2) : Mount using 2xM6 screws.

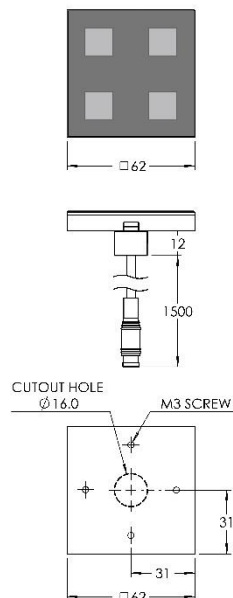


Fig.1 Touch Panel

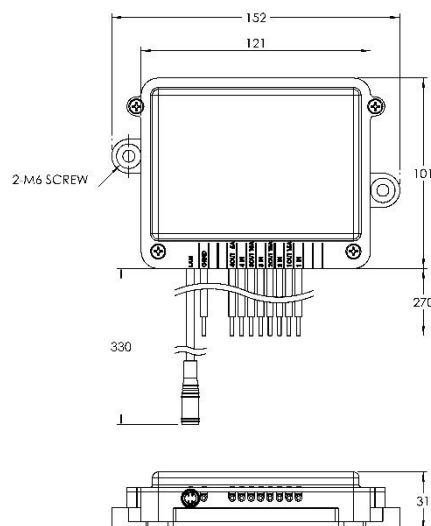


Fig. 2 Control Box

2. Connect the Touch Panel with the Control Box.

**Note:** Make sure devices do not overload the nominal amperages. Touch Panel indicator color turns red when overload and/or short circuit encountered. Each switch maximum amperages load showed in Fig.3. and label on Control Box top cover.

Wire connection:

- Blue wires connect to positive poles of the devices.
- Red wires connect to positive poles of the power supply. Do not connect the red wire if the channel is not connected to a device.
- Black wire connects to negative poles of the power supply.
- Negative poles of the devices connect to negative poles of the power supply.
- Two switch channels are required for “ON-OFF-ON” function. See setup in step 3.

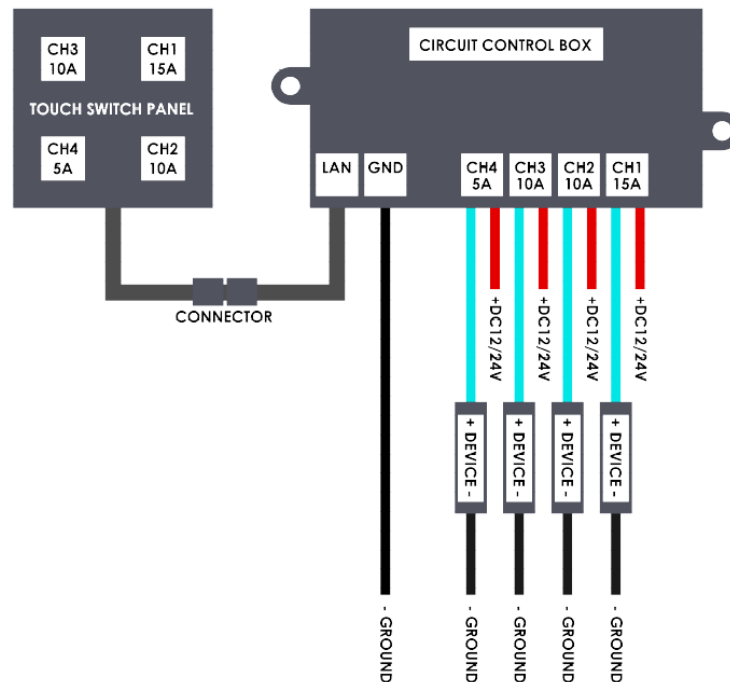


Fig. 3 Circuit Board Diagram

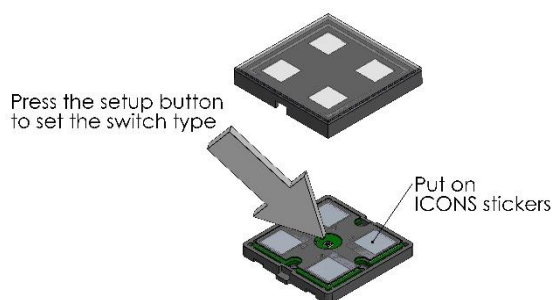


Fig. 4 Setup button & put on icons sticker

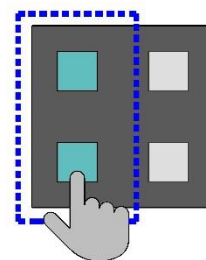


Fig. 5 ON-OFF-ON setup

3. Setup switch function:

**Note:** No setup is required if all switches are to be ON-OFF only (Default setting)

To change switch settings:

Make sure required devices and power supply are connected completely before setting. Press the setup button on Touch Panel (Fig. 4) and all indicator lights start flashing. Then tap each switch to change/choose the indicator color and its function. Once decision is made, press the setup button again. All indicator lights stop flashing, and the setup process is done. Different indicator colors represent different switch functions.

Meaning of indicator colors on the Touch Panel:

During setup

- **WHITE** – “ON-OFF” switch. (Default settings)
- **PURPLE** – “Momentary ON” switch
- **LIGHT BLUE** – “ON-OFF-ON” switches (Two switch channels are required. See Fig. 5)  
Tapping one switch will link the switch on top or below when both indicators become LIGHT BLUE. The pair becomes ON-OFF-ON.

During function

- **BLUE** – The switch is ON (apply to all settings)
- **WHITE** – The switch is OFF (apply to all settings)
- **RED** – Overload and/or short circuit
- **No light** – No wire connection

4. Once setup is done, apply suitable icons stickers on the switches (fig. 4) then put the front cover on. Make sure to remove the protective film on the top of the switch and the front cover.