

FRESH WATER PUMP OPERATING MANUAL

PRODUCT INFORMATION

Model Number(s)	10756: Pump 10758: Pump and strainer	Other Features: <ul style="list-style-type: none">- Automatically maintains smooth water flow- An integrated sensor controls pressure and protects the pump- Quiet performance- Corrosion resistant materials- Operates without accumulator tank- Low Amp draw- Snap-in fittings- Operates on 12 or 24VDC
Max Flow Rate	3.3 GPM	
Electrical	12V DC, 7.0 Amps Max.	
Dimensions	H 100 x W 150 x L 230 mm	
Weight	2,000g	
Self-Priming	Yes	
Running While Dry	Yes	
Built-in Check Valve	Yes	
Sealed Pressure Switch	Yes	
Connectors included	5/8", 5/8" elbow, 1/2"BSP, 1/2"BSP elbow	

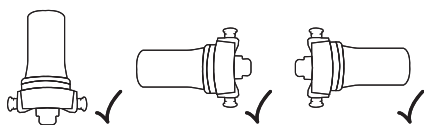
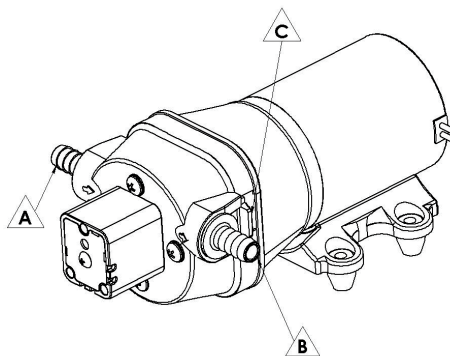
OPERATION

* Before using, make sure the battery is fully charged and the water tank is filled.

Open all faucets and turn on the pump power switch to let the water flow. When water is free of air, turn faucets off. At this point, the pump is ready to use. Whenever all valves are shut off, the pump will stop automatically. If pump fail to stop, turn off the power switch and refer to the troubleshooting section in this manual.

INSTALLATION

1. Remove shipping plugs from pump openings.
There may be some water left from factory testing.
2. Select connectors of desired size (inlet A and discharge B). Install connectors. Firmly push slide clips C forward to secure port connectors.
3. Mount pump in an accessible location.
If mounting vertically, make sure pump head stays down to keep motor from contact with water.
4. Use 1/2" (or 5/8") I.D. flexible hose (preferably braided or reinforced). Use hose clamps on connectors.
5. Install a strainer (for inspection and cleaning) in an accessible location between tank and pump inlet.
You may also use strainer (not included) which may be directly attached to pump inlet.
This strainer or equivalent is required for pump warranty to be valid.



CORRECT WAY OF INSTALLATION



WRONG WAY OF INSTALLATION

WIRING

The pump is automatic voltage switching in either a 12 or 24 volt DC battery system.
The electronics adjust the voltage and current to the motor as needed.



1. From power source, use 14 gauge stranded wire up to 15', 12 gauge wire up to 30'.
2. Use a 15 amp rated on-off switch on the (+) positive motor lead.
3. Install a 15 amp fuse protection on the positive lead.

OPTIONAL ACCESSORIES

Available Port Connectors



1/2" straight
P/N: 27070



1/2" 90° elbow
27071



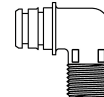
5/8" straight
27072



5/8" 90° elbow
27073



1/2" BSP straight
27080



1/2" BSP 90° elbow
27081

Strainer



Mounts directly to pump inlet
Basic model comes with 1/2" connectors
May add 5/8" connector, or simply use the original connector from pump.

TROUBLESHOOTING

**** Warning: Turn off power and drain water from system before servicing.**

Loose components in hardware might cause system to not functioning correctly. Before going further, please check system components and tighten the parts if found loose. If problem persists, please check items below.

Motor does not turn on

- No power
- Defective motor or pressure sensor
- Loose connections
- Damaged motor
- Incorrect wiring
- Blown fuse or breaker

Low or uneven flow

- Air leak in intake line
- Clogging; debris in pump or plumbing
- Worn bearings
- Damaged pump diaphragm
- Damaged motor
- Loose plumbing parts

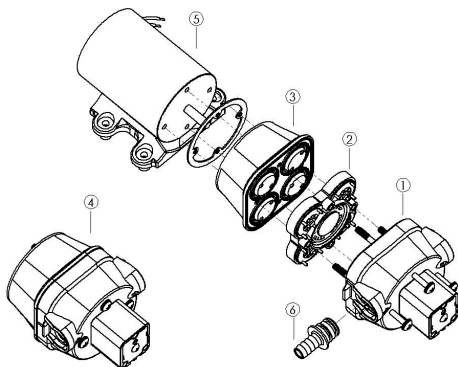
Motor runs but no discharge

- Intake and discharge reversed
- Tank empty
- Air leak in intake line
- Crack in housing or loose screws
- Restricted inlet/outlet plumbing
- Debris in pump inlet/outlet valves
- Damaged pump diaphragm
- Strainer clogged with debris

Pump does not shut off when all faucets/valves are closed

- Empty water tank
- Debris in pump
- Air trapped in pump head
- Damaged pump diaphragm
- Leaks on discharge side
- No battery in circuit
- Leaky valves in appliances (i.e. toilet, heater)

Service and Replacement Parts



If motor or pump components require maintenance or replacement, please refer to the following drawing and list of parts and contact local distributor. To disassemble and re-assemble pump, refer to instructions below.

Item	Description
1	Front housing (w/ pressure switch)
2	Valve seat
3	Diaphragm assembly (w/ gasket)
4	Pump head assembly (includes 1~3)
5	Motor
6	Connectors (see "Accessories")

1. Before disassembling, shut off water supply to pump. Drain water from pump if possible and switch off power.
2. Remove pump head assembly (item 4 on drawing): loosen the four large screws on the front housing, but do not remove them yet. Separate the entire head assembly from motor.
CAUTION:
 - Do not loosen other screws. Disassembling parts other than instructed may cause wear and leak.
 - Keep motor from contact with water.
3. Disassemble pump head assembly by sliding parts off the large screws.
Replace components (items 1~3) as necessary.
4. Re-assemble pump head assembly: align all parts on the four screws.
Make sure the four small rubber seals on the screws are securely in place (check inside the front housing, item 1). Properly align diaphragm and hold the assembly tightly.
5. Mount pump head assembly to motor: orient the assembly as shown in drawing.
Make sure gasket is between head assembly and motor. Tighten the four screws.