



EAGLE MARINE

SOURROUND VIEW
BROCHURE

2024





TABLE OF CONTENT

360° SURROUND VIEW	4
CAMERAS	
POSITIONING	8
SWIVEL CAMERAS	10
INTERFACE INTEGRATION	12
SENSOR PLATFORM	14



II
360 degrees
for an
unrestricted
view around
the yacht

360° SURROUND VIEW

01

BIRD'S VIEW

Keep an eye out for obstacles.

02

CHANGEABLE CAMERA VIEWS

Easily switch between cameras.

03

2D + 3D VIEW

Choose between 2D and 3D view.



SURROUND VIEW



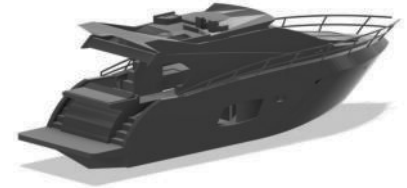
BIRD'S VIEW

Keep an eye out for any obstacles with the 360-degree bird's view perspective



CHANGEABLE CAMERA VIEWS

Make a flexible selection of the camera view that is required at the present moment



2D + 3D VIEW

Switch the perspective between the two-dimensional and augmented reality view

SURROUND VIEW

Mooring has never been so easy – with the Eagle Marine 360° Surround View for yachts.

Due to the size of the boat, secure mooring can become a real challenge.

To avoid damage, it is essential to have a complete overview of all sides.

With the Eagle-Marine 360° Surround View, you are effectively shielded from any potential harm.



HIGHEST QUALITY

Made in Germany
from V4A stainless-steel



REMOTE ACCESS

From your mobile device,
you can track movements
and weather conditions
around your yacht.



EASY MOORING

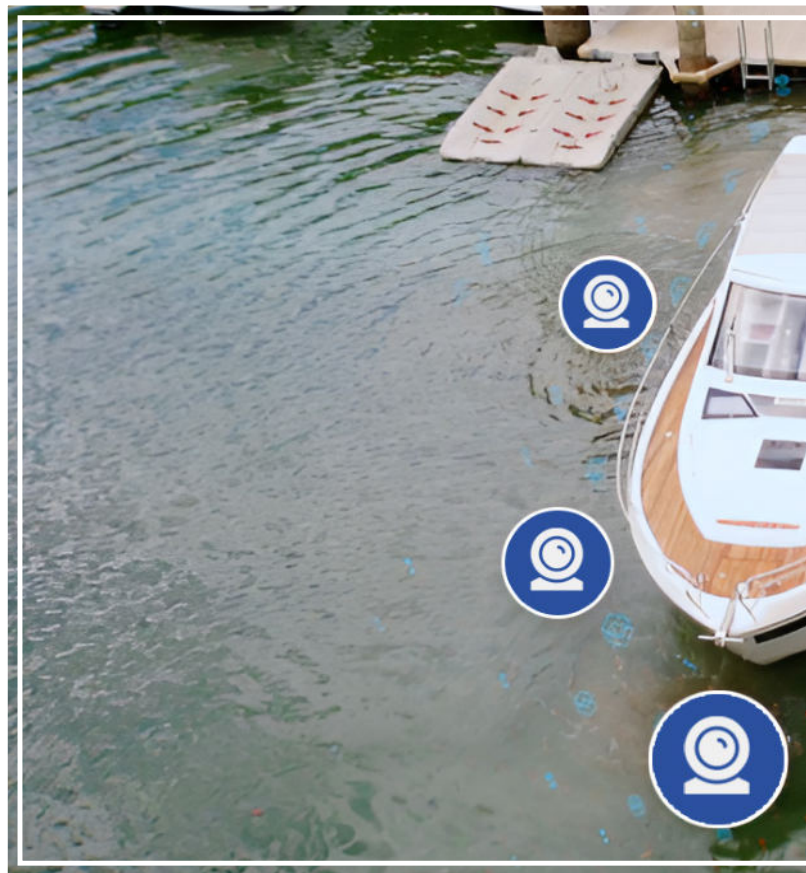
Easy and secure mooring
to avoid damage. Thorough
overview of all sides

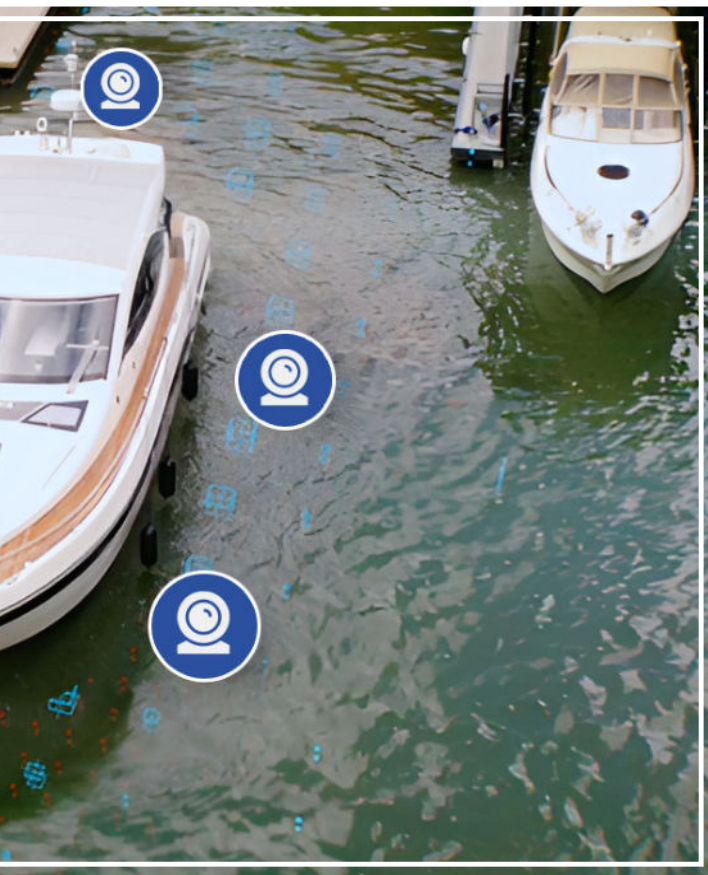


POSITIONING CAMERAS

To attain a comprehensive view, six Full-HD cameras are positioned on the hull of the yacht, resulting in a 360° video. The cameras exhibit a contemporary and unobtrusive design that seamlessly blends in with the yacht's aesthetic.

Our products are manufactured using premium V4A stainless-steel and thus meet the highest standards of our esteemed clients. To ensure an efficient installation and maintenance, the cameras can be easily mounted from the outside. This feature enables the system to be upgraded at any given moment.





ONE FRONT CAMERA



TWO CAMERAS RIGHTSIDE



TWO CAMERAS LEFTSIDE



ONE BACK CAMERA



SWIVEL CAMERAS

The latest innovation are the swiveling cameras. These enable the precise positioning of angles within a short duration, regardless of the circumstances on the yacht.

There are no additional angle adapters required to get the cameras into the correct position. This allows for an even more exquisite and flatter camera design.

01

SWIVEL CAMERAS

Keep an eye out for obstacles.

02

SEAMLESS DESIGN

The subtle design blends seamlessly into the ship's hull.

03

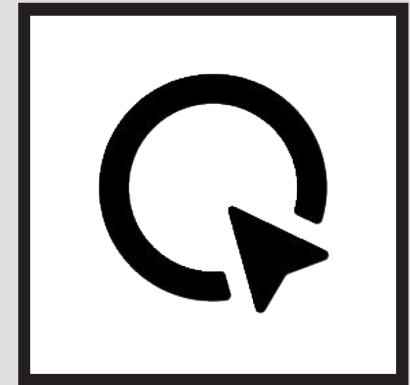
WATERPROOF CAMERAS

The cameras are waterproof to IP 68 standards.



INTERFACE INTEGRATION

When connected to Nextfour Q-Plotters, the best user experience is achieved. The entire touch operation can be performed via the display, which means that settings can be made while sailing. It is feasible to effortlessly switch between camera perspectives. Remote access is also viable from your mobile device.



Q EXPERIENCE

SURROUND VIEW

The system is compatible with multiple plotter manufacturers, such as Raymarine®, Garmin® or Simrad®, provided that the plotters possess a network or HDMI interface.



SIMRAD



GARMIN



RAYMARINE



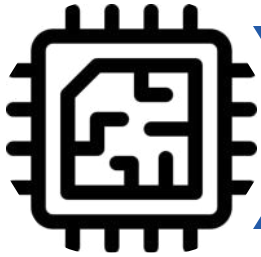
*The trademarks shown are not used as a trademark, but only in a descriptive manner. Neither the product nor the manufacturer has a direct contractual or licensing relationship with the brand owner.

SENSOR PLATFORM

The control unit is designed to integrate and process various sensor signals and data. This will enable the provision of a diverse range of driving assistance and monitoring functions



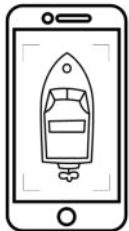
in the future. Likewise, diverse maritime data can be gathered and evaluated.



SENSOR INTEGRATION



NMEA 2000 INTEGRATION



REMOTE ACCESS

CONTACT US



EAGLE MARINE
Mühlstraße 2
73079 Süßen



+49 (0) 7162 3051928



info@eagle-marine.de



www.eagle-marine.com



www.facebook.com/eaglemarinede



ELNA GmbH
Heidehofweg 22
25499 Tangstedt



+49 (0) 4101 301 0



info@elna.de



www.elna.de



[@eagle_marine](https://www.instagram.com/@eagle_marine)